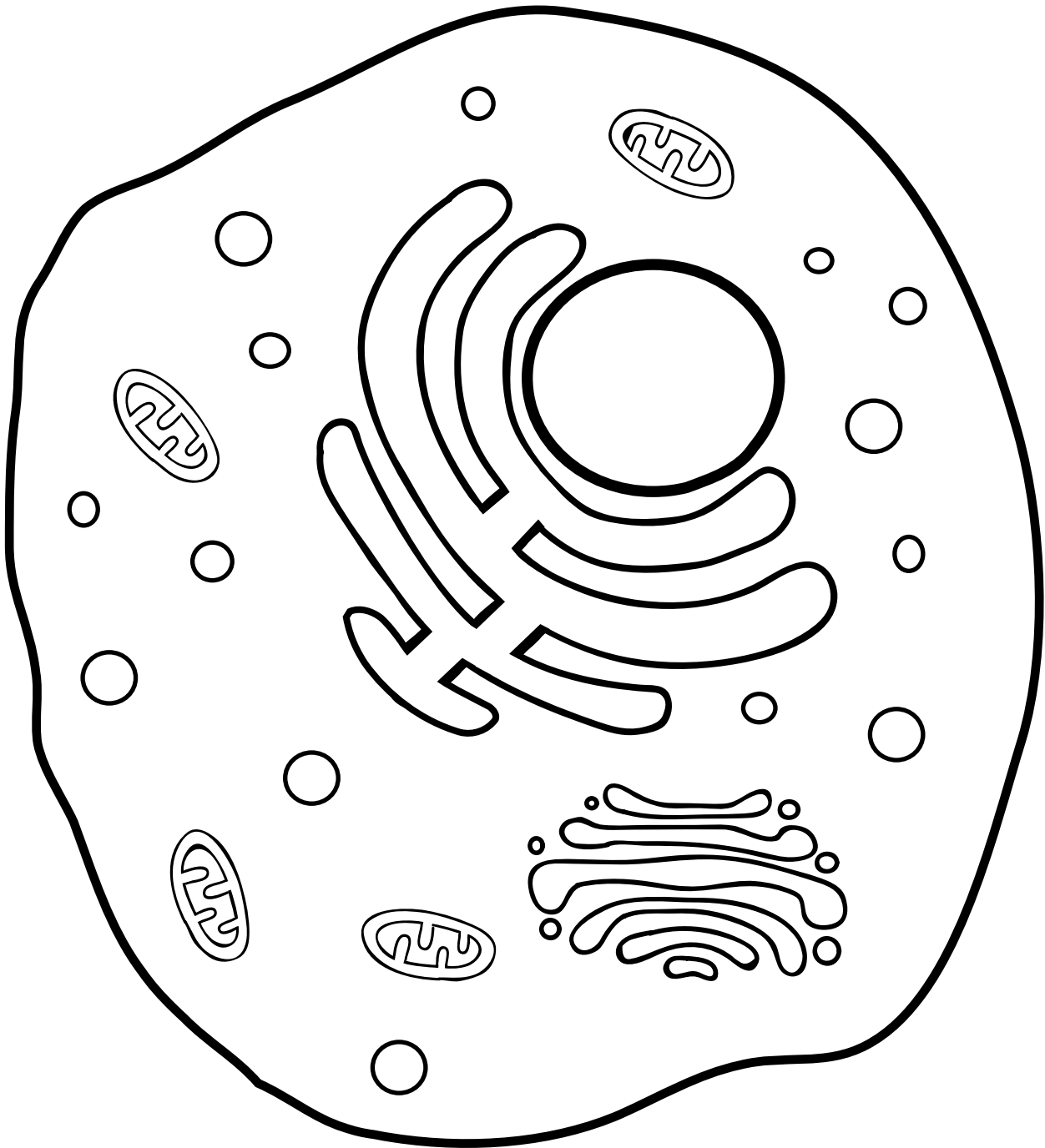
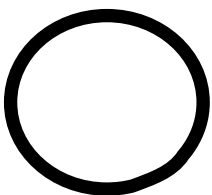


# Colour in a Cell

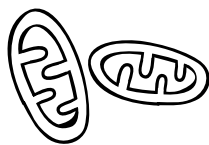


**Nucleus**



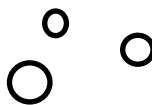
Where the DNA lives.

**Mitochondria**



Use sugar from food we eat to make energy.

**Transport Vesicles**



Act like trucks, transporting things around the cell.

**Enoplasmic Reticulum**



Quality control site for stuff the cell has made.

**Golgi Apparatus**



Sorts things into transport vesicles for delivery round the cell.